



NEWINGTON
LONDON

2 Bedrooms

Apartment

Located in London

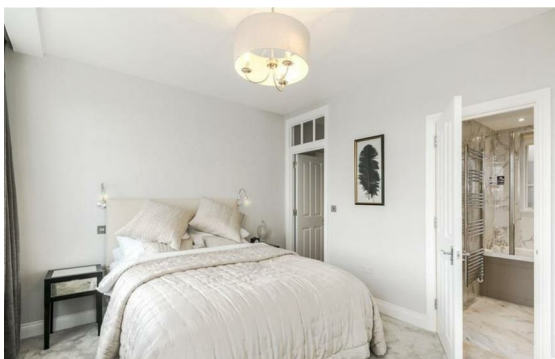
£750 Per Month



info@newingtonstates.com

<http://www.newingtonstates.com>

020 7724 2233



NEWINGTON LONDON

60 Upper Montagu Street

London

W1H 1SN

020 7724 2233

info@newingtonestates.com

Newington Estates are delighted to present you this bright and spacious two bedroom apartment within a secure portered block in the heart of Marylebone. The property benefits from reception, separate kitchen, two bedrooms, en-suite shower room and full guest bathroom.

The development also offers 24 hour concierge for residents. The property is ideally situated just 3 minutes from Edgware Road underground station, 5 minutes from Marylebone National Rail Station for services along Bakerloo, Hammersmith & City, District & Circle lines and less than a 5 minute tube to Oxford Street. EPC RATING: C

Energy Efficiency Rating:

Agents Note: Whilst every care has been taken to prepare these particulars, they are for guidance purposes only. All measurements are approximate and are for general guidance purposes only and whilst every care has been taken to ensure their accuracy, they should not be relied upon and potential buyers/tenants are advised to recheck the measurements.

<http://www.newingtonestates.com>